



WOOD●●●●

SEED ROUND

WOOD●●●●

2023
CONFIDENTIAL

AUGMENTED
WOOD

OUR MATERIAL PLATFORM TECHNOLOGY

CONCRETE + STEEL = 21% GLOBAL GHG

NEED TO BUILD 10× NYC/YEAR GLOBALLY BY 2050

SCARCER MATERIAL RESERVES + PRICE INCREASE

OUR MATERIAL PLATFORM TECHNOLOGY

●● SLIM



AUTOMOTIVE
GLASS ALTERNATIVE

SAM \$20,5B - 66,4% CAGR

●● FLOW



FASHION LUXURY
LEATHER ALTERNATIVE

\$89,6B - 49,9% CAGR

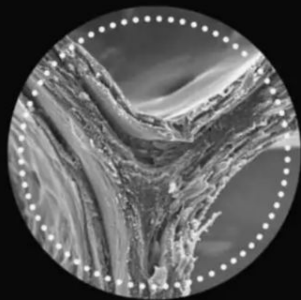
●● SOLID



CONSTRUCTION
METALS ALTERNATIVES

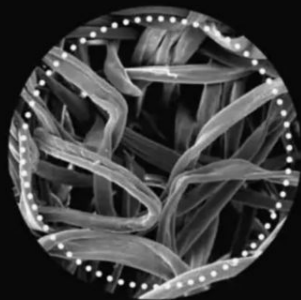
\$341,2B - 5,4% CAGR

PROCESS SLIM



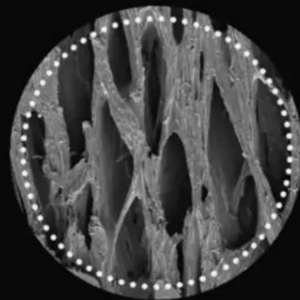
WOOD

-



LIGNIN

+



FILLING
COMPOUND

=

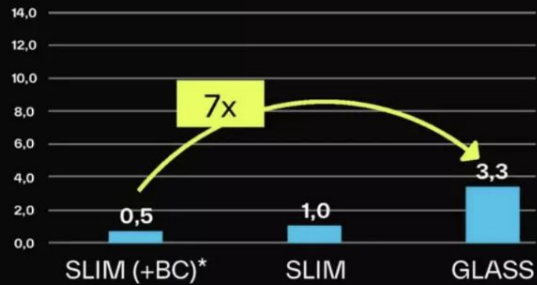


SLIM

CARBON PERFORMANCE

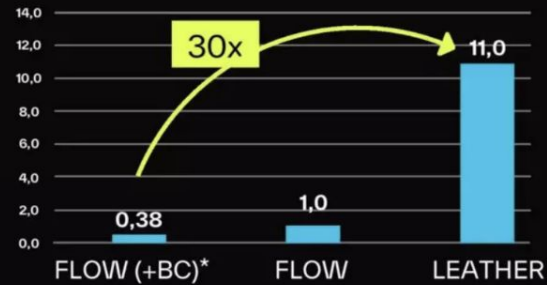
●● SLIM

KG OF CO₂/M²



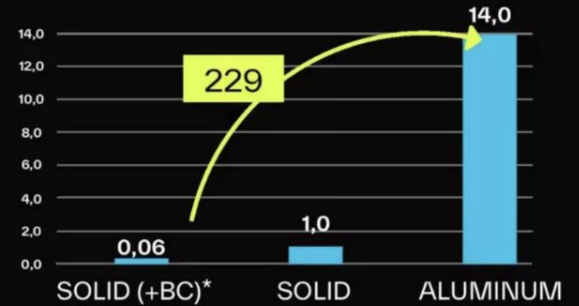
●● FLOW

KG OF CO₂/M²



●● SOLID

KG OF CO₂/M²



*BC = "biogenic carbon"

Native wood naturally sequesters carbon (known as "biogenic carbon"). Woodoo technology grounds on native wood, therefore, its overall carbon footprint takes into account this biogenic carbon sequestration.

CARBON PERFORMANCE

CELLULE



R&D / R&I / TRAINING

COMMANDERIE



SCALE-MANUFACTURING

LYON



SUBCONTRACTOR 1

20/04/23

- [linkedin.com/company/woodoo-sas](https://www.linkedin.com/company/woodoo-sas)
- twitter.com/woodoo
- [instagram.com/woodoo.sas](https://www.instagram.com/woodoo.sas)
- [woodoo.com](https://www.woodoo.com)

THANK YOU